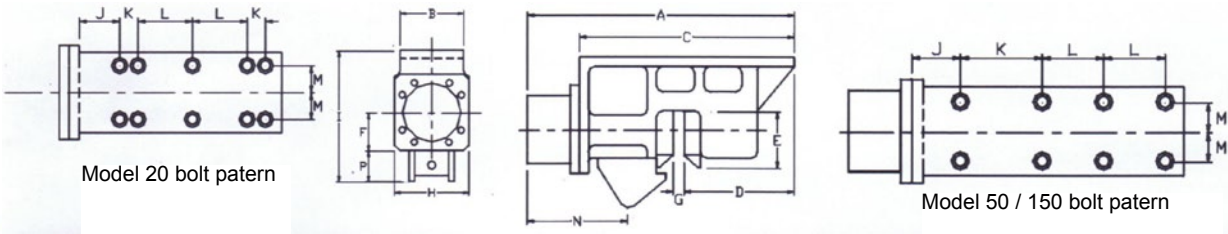
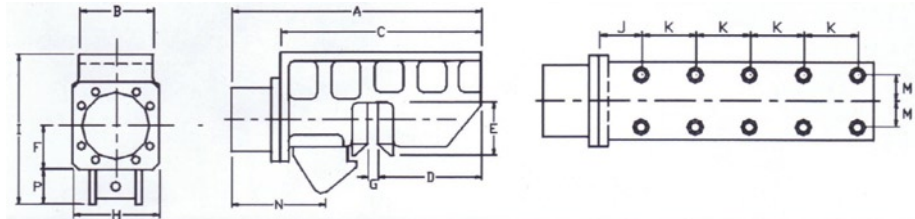


## Sheet clamps



Model	Weight	Piston dia.	Piston Stroke	Piston force	Cyl. force	Clamp force	A	B	C	D	E	F	G	H	I	J	K	L	M	N	P
20	358 kg	127 mm	57 mm	391 kN	787 kN	752 mm	254 mm	727 mm	298 mm	217 mm	117 mm	38 mm	152 mm	343 mm	117 mm	70 mm	209 mm	101 mm	178 mm	127 mm	
50	612 kg	203 mm	57 mm	1005 kN	2010 kN	117 mm	304 mm	889 mm	311 mm	260 mm	182 mm	38 mm	356 mm	568 mm	127 mm	279 mm	209 mm	101 mm	385 mm	127 mm	
150	698 kg	203 mm	57 mm	1005 kN	2010 kN	1117 mm	304 mm	889 mm	327 mm	260 mm	178 mm	41 mm	356 mm	705 mm	127 mm	279 mm	209 mm	101 mm	383 mm	127 mm	



Model	Weight	Piston dia.	Piston Stroke	Piston force	Cyl. force	Clamp force	A	B	C	D	E	F	G	H	I	J	K	L	M	N	P
200	998 kg	203 mm	57 mm	1005 kN	2010 kN	1207 mm	298 mm	1041 mm	463 mm	228 mm	178 mm	44 mm	381 mm	759 mm	146 mm	209 mm	-	102 mm	553 mm	127 mm	

