



VIBRATOR	200
Eccentric moment	51 kg-m
Frequency (max)	1.800 vpm
Centrifugal force	1.797 kN
Amplitude	30 mm
Maximum line pull	1.335 kN (136 ton)
Eccentric mass	581 kg
Dynamic mass	4.308 kg
Suspended weight	6.167 kg
Length	256 cm
Width	35 cm
Height (With clamp attachment)	238 cm
Hydraulic hose length (standard)	45 m
Suitable Powerpack	Model 540

POWER UNIT	MODEL 540
Engine	Caterpillar C15
Maximum power	540 HP
Maximum drive pressure	350 bar
Maximum hydr. flow	520 lpm
Make of pumps	Rexroth
Total weight	7.600 Kg
Length	450 cm
Width	174 cm
Height	225 cm
Fuel capacity	460 L
Hydraulic tank (main)	1.000 L

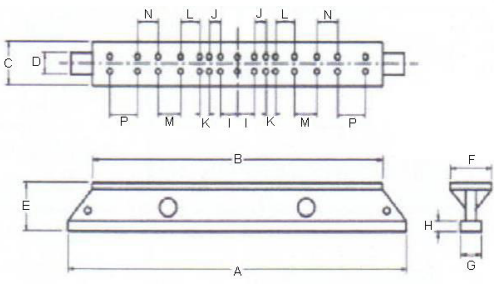
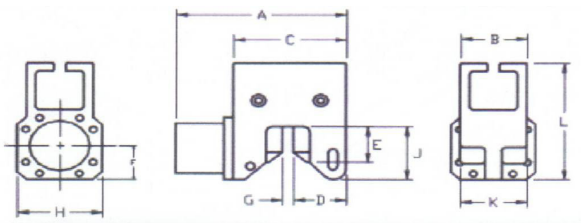


APE HOLLAND

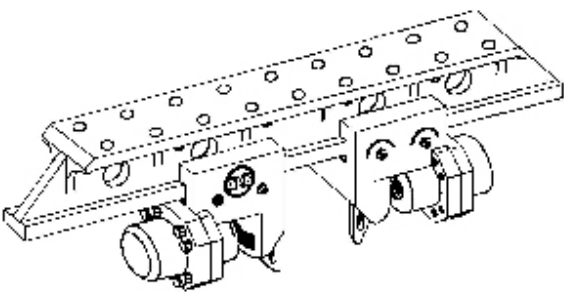


Caisson beam with caisson clamp

Model	Weight	A
2.5 m. caisson beam	925 kg	2.48 m



Model	Weight	Piston Stroke	Clamp force	A	B	C	D	E	F	G	H	J	K	L
200 caisson clamp	907 kg	57 mm	2010 kN	725 mm	279 mm	573 mm	274 mm	168 mm	184 mm	38 mm	355 mm	270 mm	279 mm	590 mm



Sheet clamps

Model	Weight	Piston Stroke	Clamp force	A	B	C	D	E	F	G	H	I	N	P
200	998 kg	57 mm	2010 kN	1207 mm	298 mm	1041 mm	463 mm	228 mm	178 mm	44 mm	381 mm	759 mm	553 mm	135 mm

